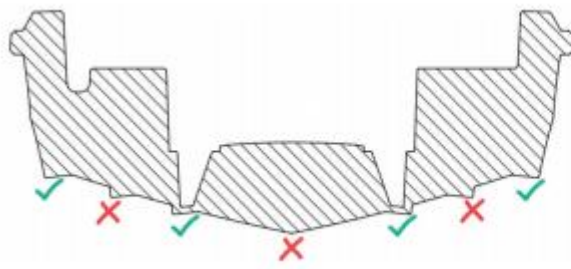


## LANDING, LIFTING AND TRANSPORT

The vessel should not be towed on the ground, as this could cause damage to the bottom. When transporting over land, your River should be lifted using lifting straps. When transporting on a trailer, make sure that the hull does not rest against sharp edges, and that the vessel rests in both specified places (see illustration). The boat must not be transported or stored on a standard boat trailer with a few pulleys/supports. The most ideal solution would be boat trailers adapted to rotationally moulded boats with long wheelbases on each side to distribute the point load well over a large area.

The boat is secured/strapped in accordance with regulations for transport, but should not be strapped with great force or stand with force on the straps for a long time as this can cause deformations on the boat. The illustration below shows a cross section of the boat's bracing system, and the markers indicate where it will be suitable to support the hull. A warning sign has also been installed on board the boat as a reminder.



## BOAT STORAGE

In storage, the vessel should be stored dry and covered. The vessel is stored by docking under both side-shines and on inner step/ speed-rails (see illustration above). The boat must not be supported along the keel. As a good rule, the storage points should be as large areas as possible so that you do not get permanent deformations at too high point load in a small area. During storage on land, the drain valve (expanding sealing plug) aft at the engine well must be open so that there is no water on the floor.

If the vessel is stored outdoors, it must be covered for snow load, so that this slips off and does not remain wet and heavy on board the boat. In such extreme cases, the boat can be deformed and damaged. The boat can be winter stored over time on a boat trailer but note that a boat trailer with pulleys/wheels is required that runs the entire length of the boat so that the point load is spread over large parts of the hull, and is placed according to illustration. See LANDING, LIFTING AND TRANSPORT.